

Queen Street Urban Park

June 2024

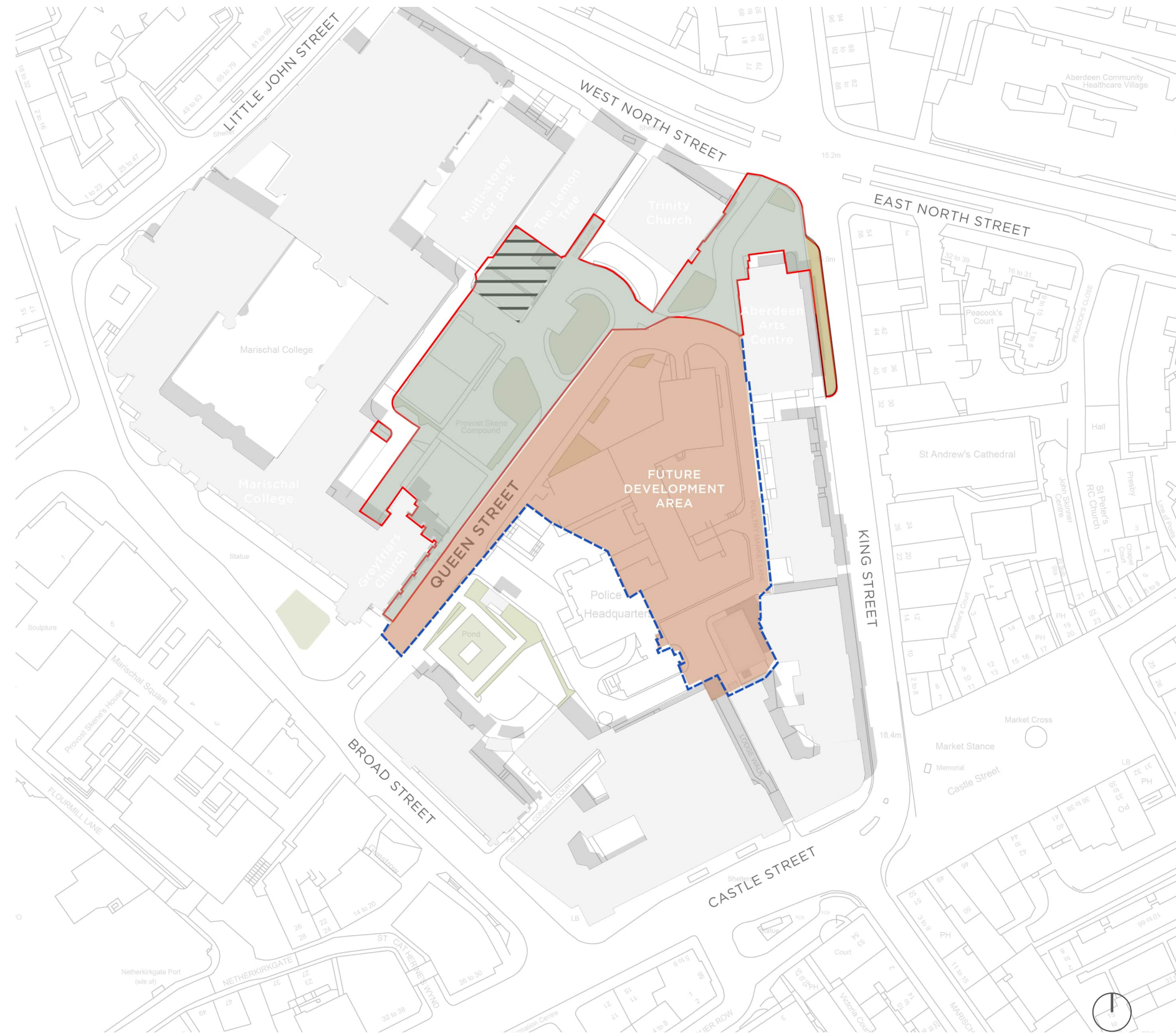


**GENERATION
ABERDEEN**
OUR CITY OF OPPORTUNITY

open
optimised environments
PART OF  SLR

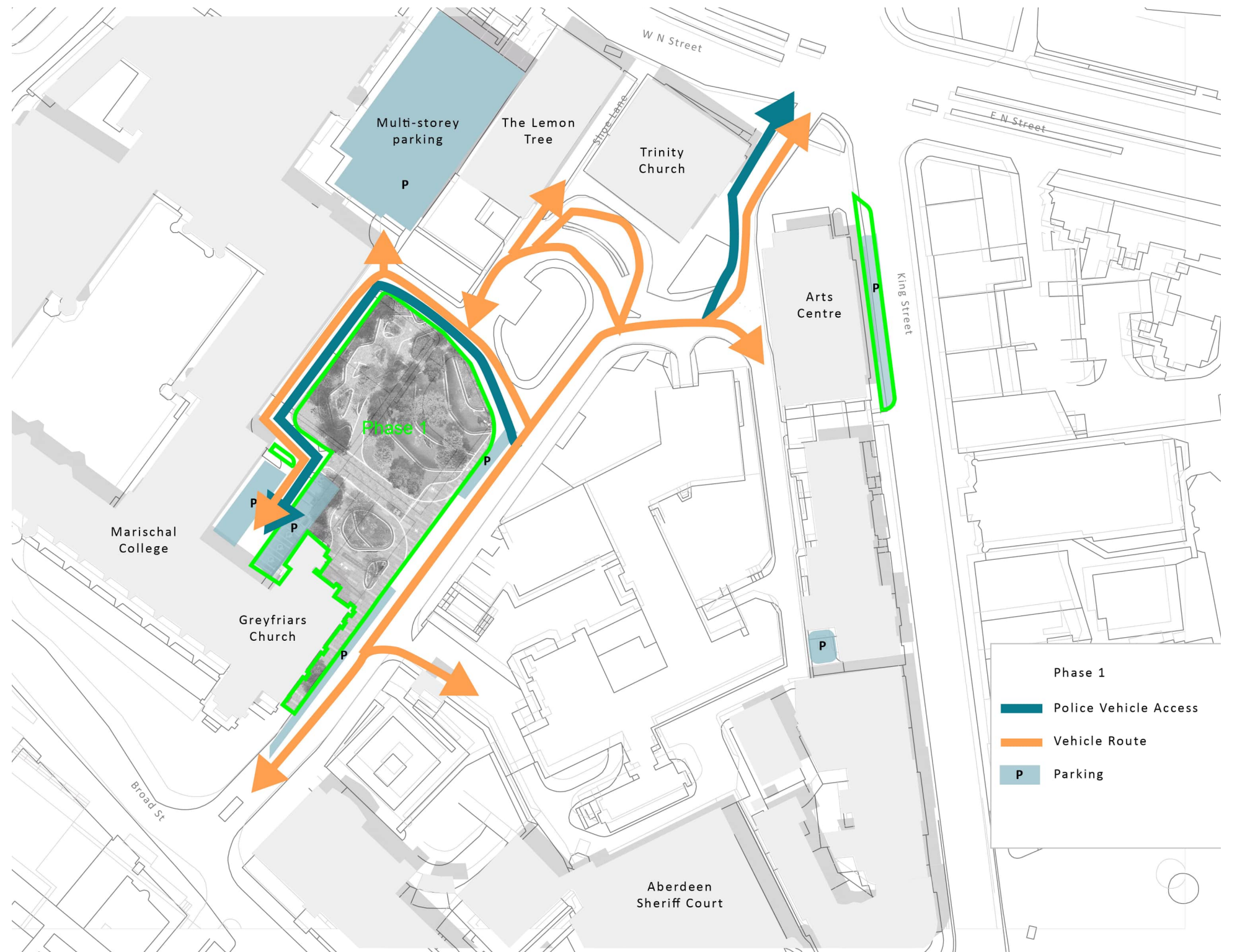
Extent of Urban Park

- Queen Street and adjacent site of the existing former Police Scotland HQ is excluded from the study area



Movement - Phase 1

- Movement remains as existing



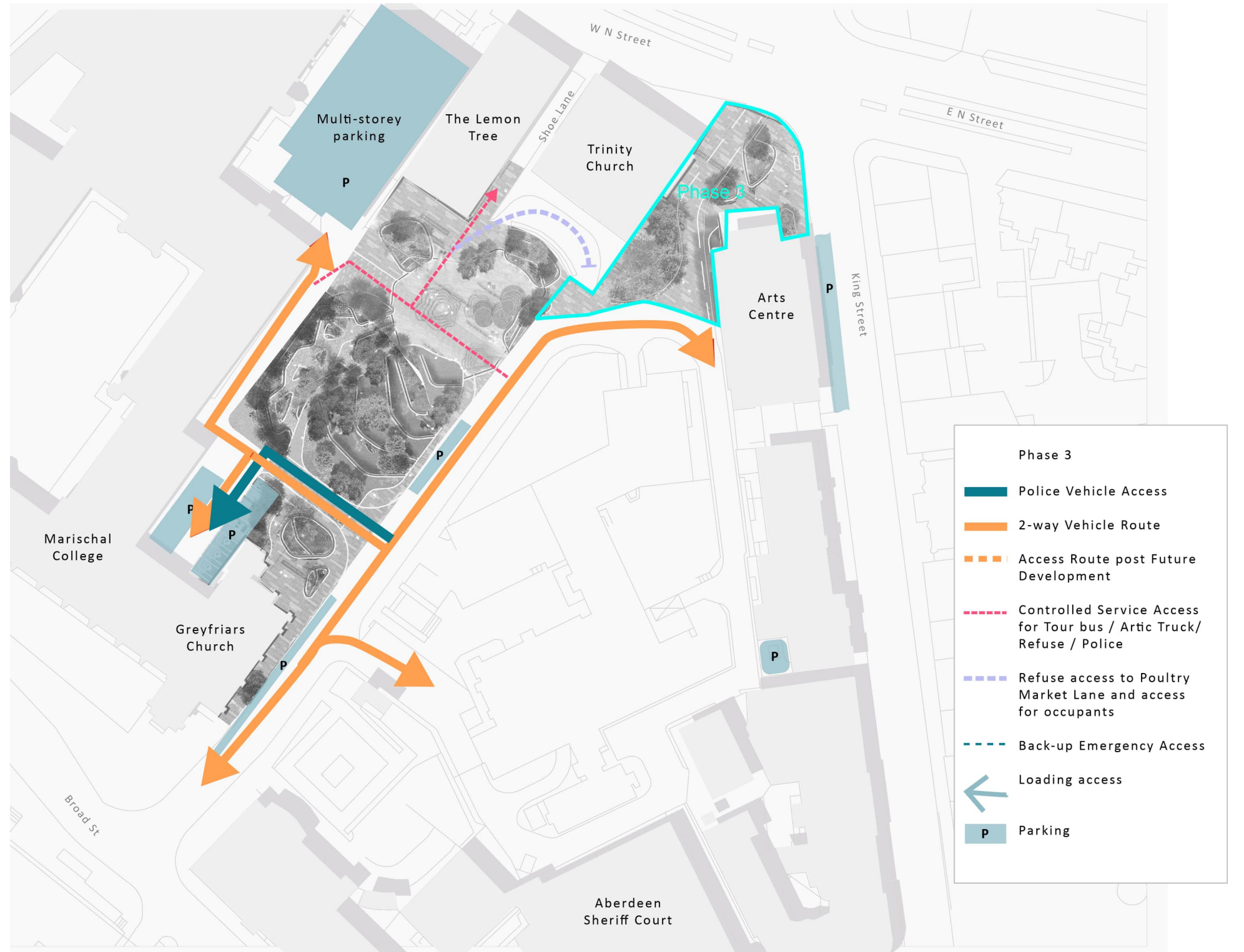
Movement - Phase 2

- Queen St. movement remains as existing
- New route into multi-storey parking
- New route for Police parking
- No vehicle access to Lemon Tree



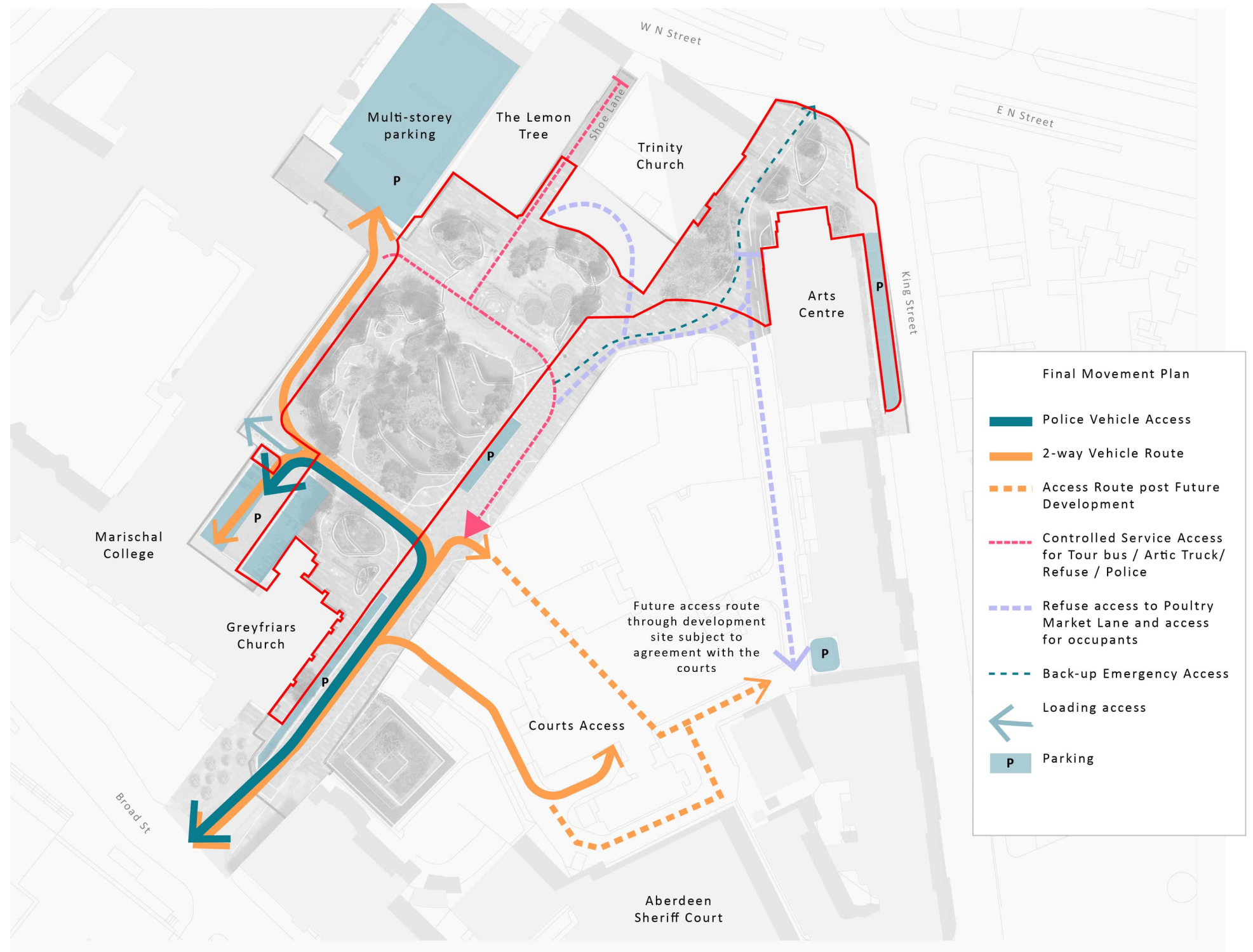
Movement - Phase 3

- Queen St. movement remains as existing
- Central park access restricted to service and occupant access only
- Exit onto W. N Street no longer available during works



Movement - Final Design

- Queen St. becomes part of the park
- Vehicle access with defined limitations



Illustrative Masterplan

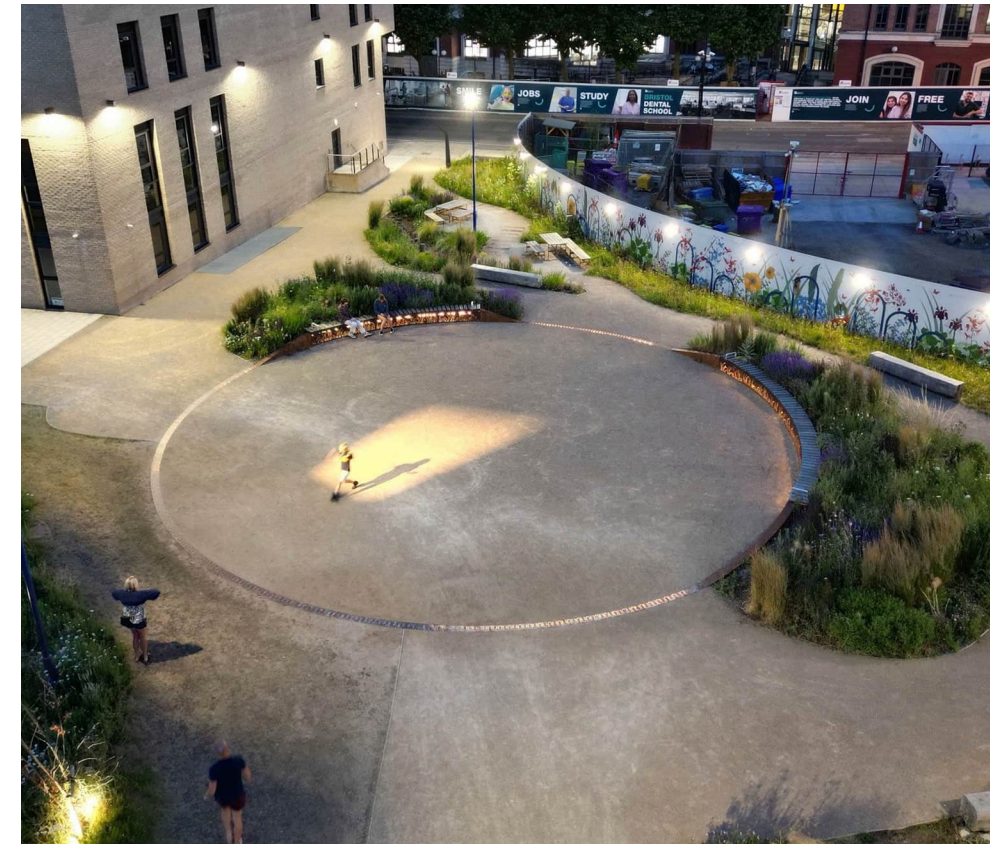


Undergoing
update



Performance

- Flexible paved space for informal performances, small-scale events and exhibitions
- Enclosed by seating walls, planting and trees
- Future spill out space for surrounding venues





and the eye refreshed with green at almost every point

**QUEEN
STREET**

Sensory Gardens

- Variety of planting types
- Community growing space
- Education space
- Quieter reflective seating areas
- Art and interpretation
- Restorative space



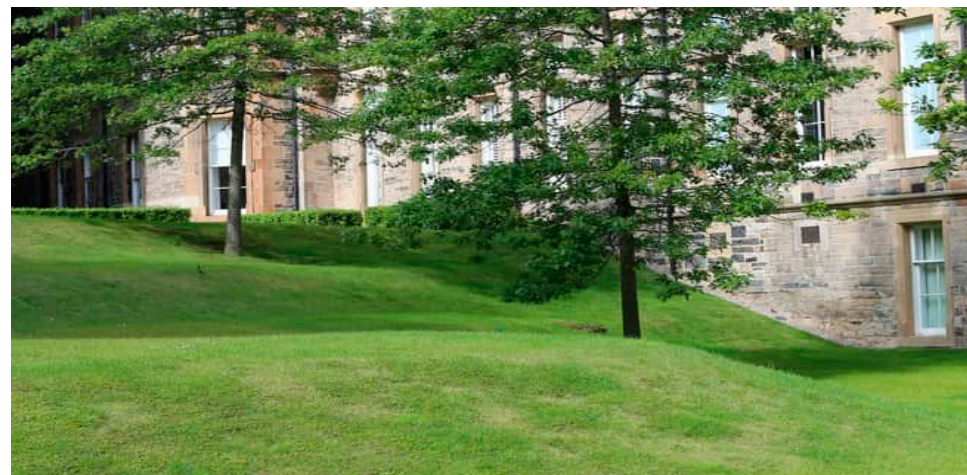
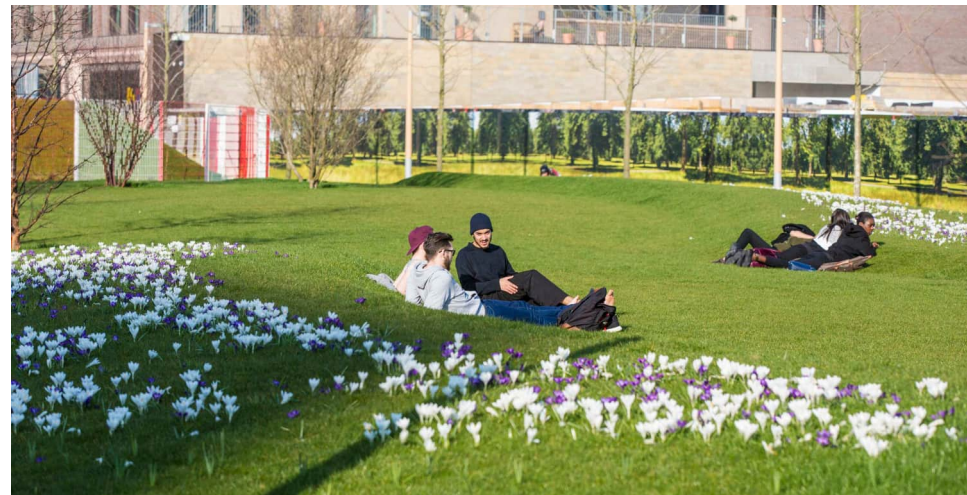
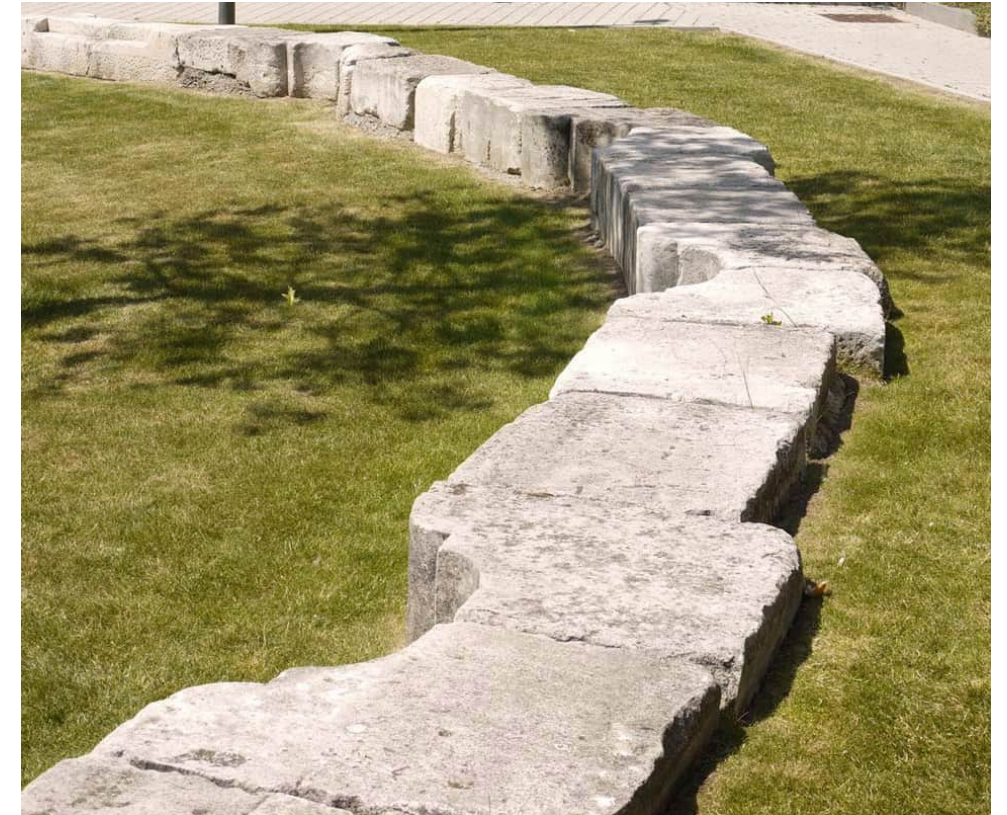


But adorn the landscape and purify the air

"Trees not only afford shade and shelter"

Terraces

- Large open park space
- Species-rich mown grass with scattered trees
- Some existing trees retained
- Sculpted landform and grass terraces
- Overlooking performance and events space





Gateways & Connecting Public Realm

- Inviting arrival space that signals the character of the park
- Clear and legible movement routes
- Pedestrian priority
- Wayfinding and signage
- Street trees and planting
- Improved frontages to buildings and potential for spill out space





Concept Sketch

